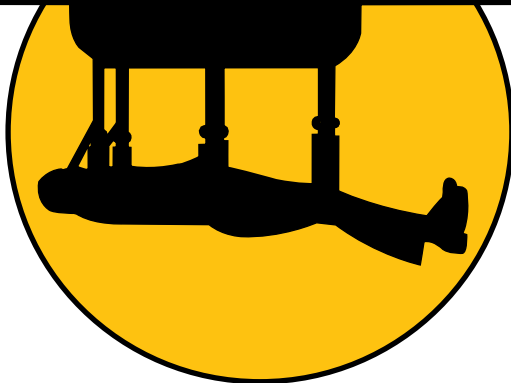


# *THE ULTIMATE 1000 LIFT™*

## Receiver Board Replacement Procedure

**MORTUARY LIFT™ COMPANY**

**A L i f t i n g E x p e r i e n c e ™**



127 Cottage Grove Avenue S.E.  
Cedar Rapids, Iowa 52403  
800-628-8809 • 319-364-4910  
[www.mortuarylift.com](http://www.mortuarylift.com)

# WARNING

**Failure to read, understand, or follow these procedures precisely may result in damage to your machine and injury to yourself and others.**



## BEFORE YOU BEGAN

**Unplug the machine from the power source!**

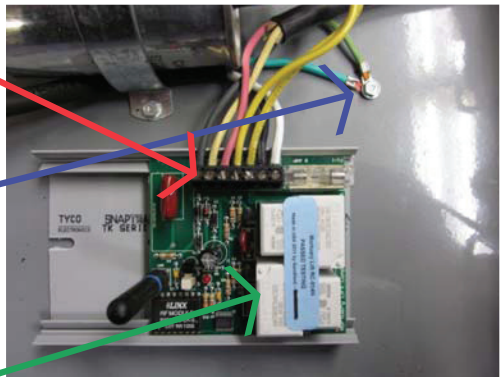
1. Remove cover from machine by removing four screws, two on either side.

2. Remove the black electrical cover.



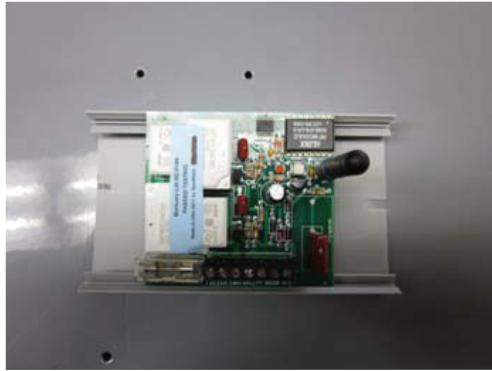
3. Loosen the seven screws holding wires in place.

4. Remove screw that holds the two ground wires to base.

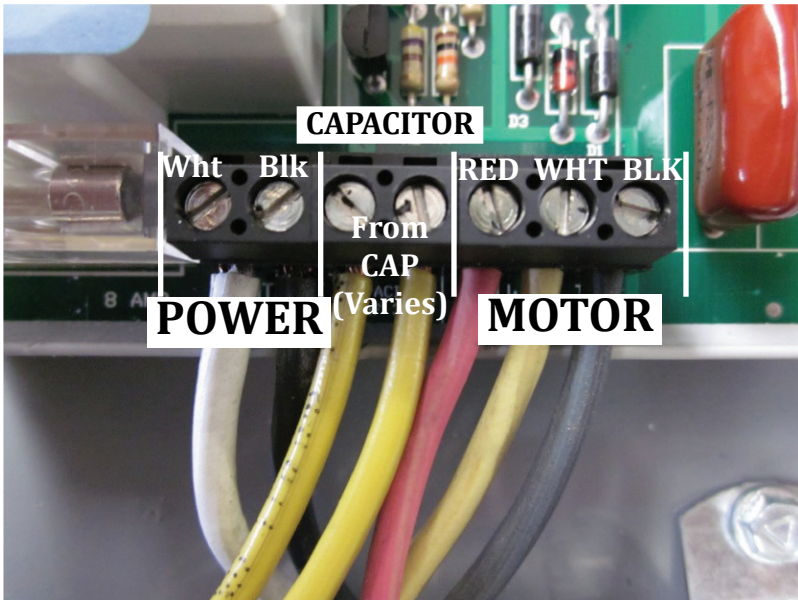


5. Remove the receiver board by prying outward on the plastic track.

6. Install new receiver board by passing one side in and then the other.



7. Install wires on the new board in the same configuration as pictured. Double check the wire ends. All wires must be securely placed inside the terminal. Any stray wires outside the terminal will arc, causing a short in the board. This is not covered under



8. Replace covers and plug in machine.

**MORTUARY LIFT™ COMPANY**

**A L i f t i n g E x p e r i e n c e . . .**



***THE ULTIMATE 1000 LIFT™***

127 Cottage Grove Avenue S.E.  
Cedar Rapids, Iowa 52403  
800-628-8809 • 319-364-4910  
[www.mortuarylift.com](http://www.mortuarylift.com)